



Rottweg 17 • D 48683 Ahaus
Tel. (0 25 61) 93 84-0
Fax (0 25 61) 93 84 36
Internet: www.ab-maschinen.de
E-Mail: info@ab-maschinen.de

Schweißtechnik
Lagereinrichtungen
Industriebedarf
Werksvertretungen
Gebrauchtmaschinen

SCHROEDER MHSUV 3200/3.0 (1008-9325413)



Control type
NC

Construction year
2002

Machine no.
1008-9325413

Make
SCHROEDER

Location
Ahaus

** Current new price including accessories approx. 70.000 Euro

** From a maintenance workshop

** Very good condition (!!)

** Special price upon request

Features:

- Robust / motorized swing cut guillotine shear
- Shatter-proof, torsion-free welded steel construction
- Compact and clearly arranged machine design
- NC electro-motorized backgauge
- * With SCHRÖDER NC POS 100 control unit
- * Adjustable from the front right
- * With target/actual value input
- * Continuous adjustment across the entire travel range
- * Coarse adjustment via pushbuttons
- * Limit value protection with limit switches
- "Duo-Cut" drive with two dynamic, powerful gear motors

- Support table with recessed grips
- Hold-down bar with hard rubber strip
- All-steel blade
- 1x side stop with T-slot and digital mm scale
- 2x extended sheet support arms
- Selector switch for single and Continuous stroke
- 1x freely movable foot switch
- Rear safety device (side guards)
- Original operating instructions

** Optional accessories included:

- Pneumatically controlled sheet support device for thin sheet blanks

* Sheet removal / sheet slide to the front (operator side)

Machine attributes

sheet width:	3230 mm
plate thickness:	3.00 mm
thickness at "Niro-steel":	1.75 mm
no. of strokes:	34 Hub/min
cutting angle:	1.60 Grad
table height:	820 mm
distance between columns:	3540 mm
Control:	POS 100
air pressure:	6.0 bar
engine output:	6.8 kW
weight of the machine ca.:	3510 kg
range L-W-H:	4070 x 2070 x 1400 mm

Machine images



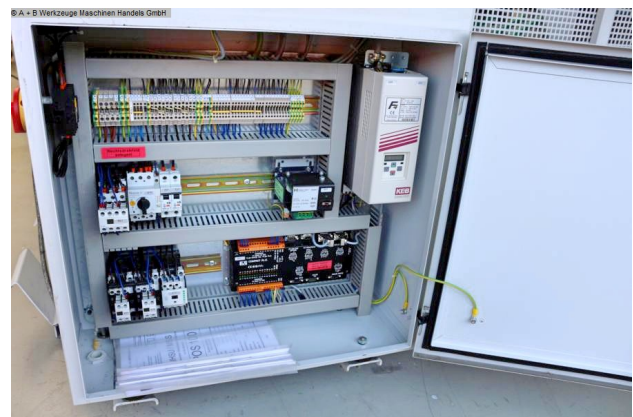


Rottweg 17 • D 48683 Ahaus
 Tel. (0 25 61) 93 84-0
 Fax (0 25 61) 93 84 36
 Internet: www.ab-maschinen.de
 E-Mail: info@ab-maschinen.de

Schweißtechnik
 Lagereinrichtungen
 Industriebedarf
 Werksvertretungen
 Gebrauchtmachines



© A + B Werkzeuge Maschinen Handels GmbH





Rottweg 17 • D 48683 Ahaus
Tel. (0 25 61) 93 84-0
Fax (0 25 61) 93 84 36
Internet: www.ab-maschinen.de
E-Mail: info@ab-maschinen.de

Schweißtechnik
Lagereinrichtungen
Industriebedarf
Werksvertretungen
Gebrauchtmaschinen

© A + B Werkzeuge Maschinen Handels GmbH

