



Rottweg 17 • D 48683 Ahaus
Tel. (0 25 61) 93 84-0
Fax (0 25 61) 93 84 36
Internet: www.ab-maschinen.de
E-Mail: info@ab-maschinen.de

Schweißtechnik
Lagereinrichtungen
Industriebedarf
Werksvertretungen
Gebrauchtmaschinen

SCHROEDER MHSU 2030 x 3.0 (1008-9325417)



Control type
konventionell

Construction year
1990

Machine no.
1008-9325417

Make
SCHROEDER

Location
Ahaus

- ** From a maintenance workshop (BOSCH)
- ** Current new price approx. 30.000 Euro
- ** Special price upon request

The MHSU model motorized guillotine shear was developed for sheet metal and plastic processing. With these shears, you can effortlessly produce clean cuts in series.

Features:

- Robust, motorized swing-cut guillotine shear
- Shatter-proof, torsion-free welded steel construction
- Compact and clearly arranged machine design
- Manual depth/backgauge
 - * Adjustment via handwheel from the rear
 - * Adjustment range max. 500 mm
- 1x hold-down bar
- Support/work table with 10 mm-spaced recesses

- Extended, extendable support table
- 1x freely movable foot switch
- Rear sheet slide
- 1x used set of spare blades
- Operating instructions

Machine attributes

sheet width:	2030 mm
plate thickness:	3.0 mm ST
plate thickness:	4.0 mm ALU
distance between columns:	2100 mm
no. of strokes:	34 Hub/min
cutting angle:	2.0 °
back stop - adjustable:	max. 500 mm
work height max.:	805 mm
total power requirement:	2.5 kW
weight:	1250 kg
range L-W-H:	2400 x 1400 x 1100 mm

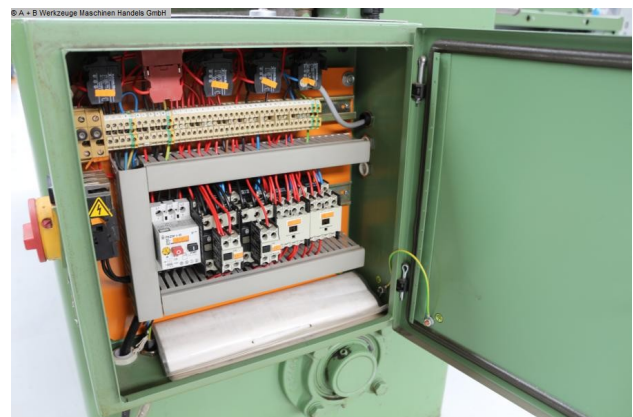
Machine images





Rottweg 17 • D 48683 Ahaus
 Tel. (0 25 61) 93 84-0
 Fax (0 25 61) 93 84 36
 Internet: www.ab-maschinen.de
 E-Mail: info@ab-maschinen.de

Schweißtechnik
 Lagereinrichtungen
 Industriebedarf
 Werksvertretungen
 Gebrauchtmachines





Rottweg 17 • D 48683 Ahaus
Tel. (0 25 61) 93 84-0
Fax (0 25 61) 93 84 36
Internet: www.ab-maschinen.de
E-Mail: info@ab-maschinen.de

Schweißtechnik
Lagereinrichtungen
Industriebedarf
Werksvertretungen
Gebrauchtmaschinen

