



Rottweg 17 • D 48683 Ahaus
Tel. (0 25 61) 93 84-0
Fax (0 25 61) 93 84 36
Internet: www.ab-maschinen.de
E-Mail: info@ab-maschinen.de

Schweißtechnik
Lagereinrichtungen
Industriebedarf
Werksvertretungen
Gebrauchtmaschinen

PLACKE EQPB 2 - 50/1275 (1008-9308409)



Control type
CNC

Construction year
2004

Machine no.
1008-9308409

Make
PLACKE

Location
Ahaus

** current new price approx. 80.000 euros

** special price on request

** good / well-maintained condition (!!)

- in checked condition - machine video -

<https://www.youtube.com/watch?v=5L8L2AYv0PU>

PLACKE electro-hydraulic CNC press brake
specially developed for the production of small parts

The advantages:

- ? Low energy consumption
- ? High operating comfort
- ? Wide range of applications
- ? Fast, robust, low-noise
- ? With CNC control as standard

Equipment:

- CNC electro-hydraulic press brake with 1x working cylinder
- DELEM CNC control model "DM 51"
- CNC controlled axis: Y1 - Y2 - X
- CNC electro-motorized back stop
- * Travel path: X = max. 600 mm
- * Travel speed X axis .. max. 300 mm/s
- * Positioning accuracy .. +/- 0.02 mm
- * with 2x manually adjustable stop fingers (R+Z axis)
- WILA standard - manual upper tool clamping
- WILA standard - manual lower tool clamping
- PLACKE safety device at the front: light barrier
- side protective device (swivel doors)
- rear protective device (swivel + lockable door)
- front storage area
- side sorting system for bending tools
- 1x freely movable foot control
- original operating instructions including circuit and hydraulic diagram

Machine attributes

pressure:	50.0 t
chamfer lenght:	1275 mm
distance between columns:	1040 mm
column arm:	250 mm
ram stroke speed:	225 mm/sec
work speed:	0 - 9.8 mm/sec
return speed:	160 mm/sec
work stroke:	215 mm
daylighth:	512 mm
table height:	800 mm
back stop - adjustable:	600 mm
control:	DELEM DM 51
operating pressure:	max. 300 bar
oil volume:	150 ltr.
voltage:	400 V
engine output:	6.0 kW
Weight:	4300 kg
range L-W-H:	1930 x 1510 x 2390 mm

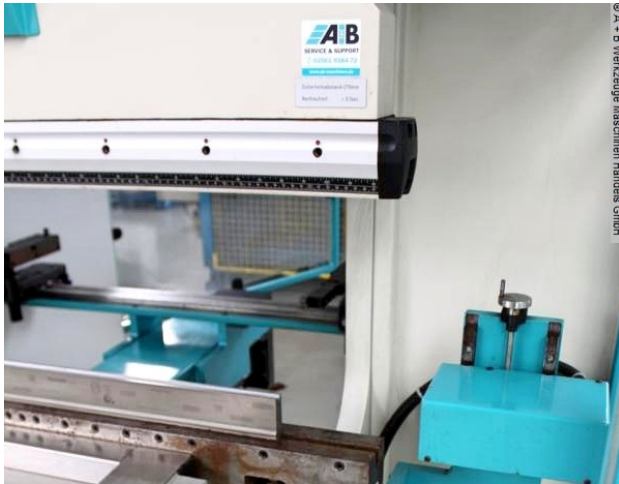
Machine images



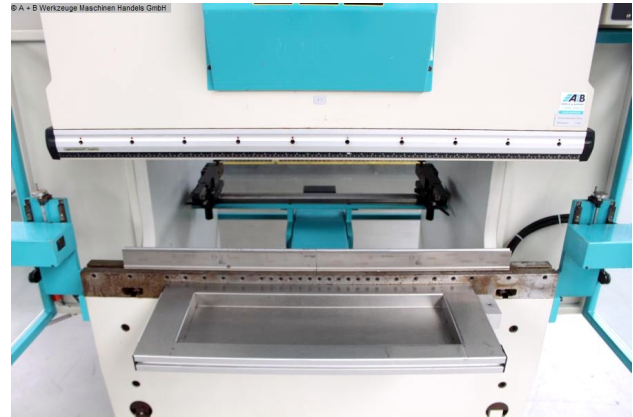


Rottweg 17 • D 48683 Ahaus
 Tel. (0 25 61) 93 84-0
 Fax (0 25 61) 93 84 36
 Internet: www.ab-maschinen.de
 E-Mail: info@ab-maschinen.de

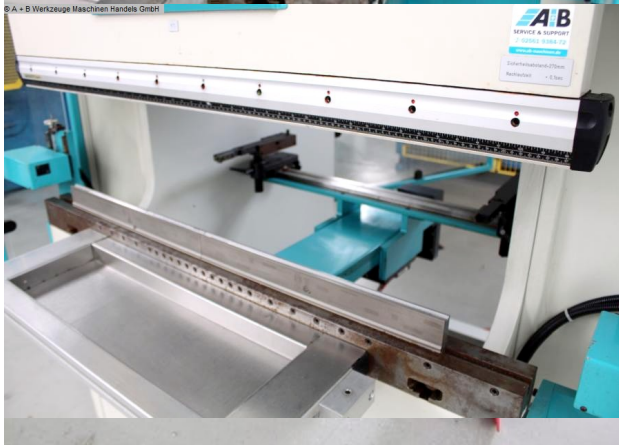
Schweißtechnik
 Lagereinrichtungen
 Industriebedarf
 Werksvertretungen
 Gebrauchtmachines



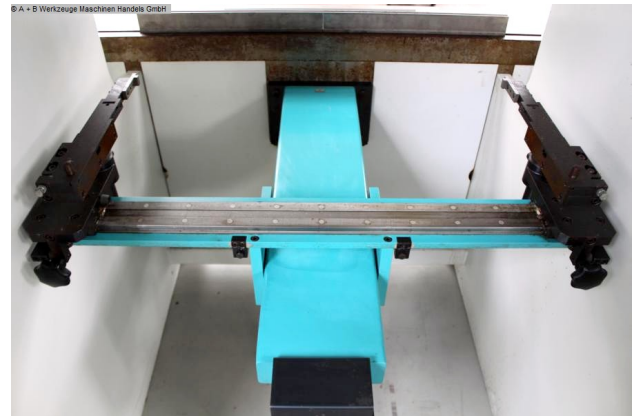
© A + B Werkzeuge Maschinen Handels GmbH



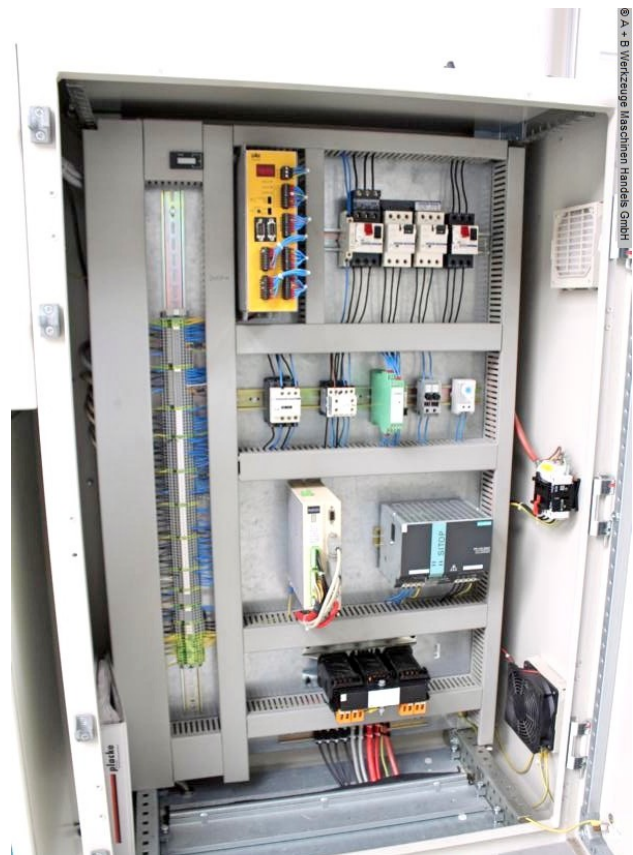
© A + B Werkzeuge Maschinen Handels GmbH



© A + B Werkzeuge Maschinen Handels GmbH



© A + B Werkzeuge Maschinen Handels GmbH



© A + B Werkzeuge Maschinen Handels GmbH



Rottweg 17 • D 48683 Ahaus
Tel. (0 25 61) 93 84-0
Fax (0 25 61) 93 84 36
Internet: www.ab-maschinen.de
E-Mail: info@ab-maschinen.de

Schweißtechnik
Lagereinrichtungen
Industriebedarf
Werksvertretungen
Gebrauchtmaschinen

© A + B Werkzeuge Maschinen Handels GmbH

placke GmbH
Werkzeug-
Blechbearbeitungsmaschinen

Auf dem Platen 7 – 11
D - 49326 Melle
Tel.: 05422 - 45015
Fax.: 05422 - 43637
e-mail: info@placke.de
<http://www.placke.de>

Modell	E0PB 2	Spannung	400 Volt
Typ	50/1275	Frequenz	50 Hz
Baujahr	2004	Stromstärke	12 A
Maschinen Nr.	P 152	Anschlußleistung	6 kW
Presskraft	500 kN	Betriebsdruck	300 bar
Antriebsleistung	4 kW	Eilgang ab	225 mm/s
Ausladung	250 mm	Arbeitsgang	9,8 mm/s
Stoßelhub	215 mm	Rückzug	160 mm/s
Einbauhöhe	512 mm		
Gewicht	4,3 t		

Betriebsanleitung beachten !

CE