



Rottweg 17 • D 48683 Ahaus  
Tel. (0 25 61) 93 84-0  
Fax (0 25 61) 93 84 36  
Internet: [www.ab-maschinen.de](http://www.ab-maschinen.de)  
E-Mail: [info@ab-maschinen.de](mailto:info@ab-maschinen.de)

Schweißtechnik  
Lagereinrichtungen  
Industriebedarf  
Werksvertretungen  
Gebrauchtmaschinen

## MB POS 1 TW (1008-845905)

© A + B Werkzeuge Maschinen Handels GmbH



**Control type**  
konventionell

**Machine no.**  
1008-845905

**Make**  
MB

**Location**  
Ahaus

For heavy industry

When choosing a turntable, it is essential

Turning and tilting torque must be taken into account. To note  
applies to how far the center of gravity of the workpiece is from the  
The faceplate is away or how far the center of gravity is  
is eccentric from the center. By means of a  
Rotary and tilting tables can be used to optimize workpieces  
position for welding.

- Robust construction.
- Infinitely variable.
- Hand remote control.
- HF protected.

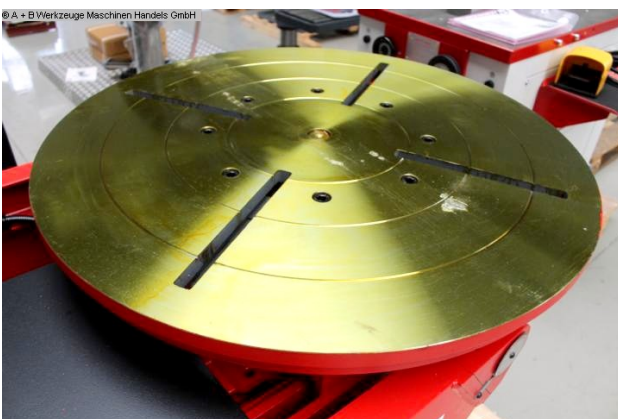
Furnishing :

- 1 control (integrated)
- 1 wired remote control

## Machine attributes

table load:	1000 kg
table diameter:	900 mm
turning speeds:	0,12 - 1,2 U/min
swivelling range:	0 - 135 Grad
speed:	Kipp 0,35 U/min
welding current:	500 A
dimensions of the machine ca.:	1475 x 1050 x 900 mm

## Machine images





Rottweg 17 • D 48683 Ahaus  
Tel. (0 25 61) 93 84-0  
Fax (0 25 61) 93 84 36  
Internet: [www.ab-maschinen.de](http://www.ab-maschinen.de)  
E-Mail: [info@ab-maschinen.de](mailto:info@ab-maschinen.de)

Schweißtechnik  
Lagereinrichtungen  
Industriebedarf  
Werksvertretungen  
Gebrauchtmachines



© A + B Werkzeuge Maschinen Handels GmbH

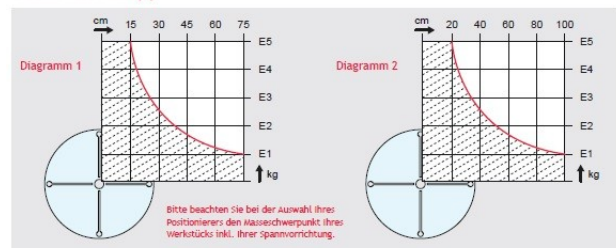


© A + B Werkzeuge Maschinen Handels GmbH



© A + B Werkzeuge Maschinen Handels GmbH

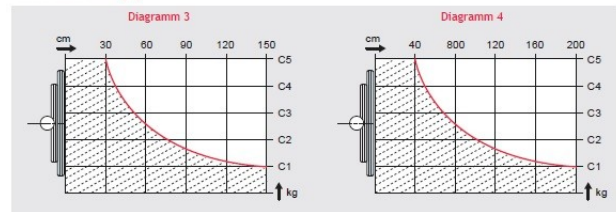
© A + B Werkzeuge Maschinen Handels GmbH



Exzentrisch POS-ITW

Diagram	
E1 (in kg)	200
E2 (in kg)	400
E3 (in kg)	600
E4 (in kg)	800
E5 (in kg)	1.000

Zentrische Last (C)



Zentrisch POS-ITW

Diagram	
C1 (in kg)	200
C2 (in kg)	400
C3 (in kg)	600
C4 (in kg)	800
C5 (in kg)	1.000