



Rottweg 17 • D 48683 Ahaus
Tel. (0 25 61) 93 84-0
Fax (0 25 61) 93 84 36
Internet: www.ab-maschinen.de
E-Mail: info@ab-maschinen.de

Schweißtechnik
Lagereinrichtungen
Industriebedarf
Werksvertretungen
Gebrauchtmaschinen

FASTI 509-10/4 (1008-9325118)



Control type
konventionell

Construction year
1991

Machine no.
1008-9325118

Make
FASTI

Location
Ahaus

- ** from a maintenance workshop
- ** good condition (!!)
- ** The back gauge was extensively overhauled

Furnishing:

- electric / hydraulic guillotine shears
- electrical backgauge with ELGO digital display
- pneumatic sheet metal holding device
- electrical cutting length limitation
- manual cutting gap adjustment
- 1x side stop, with scale
- 2x support arms
- foot switch
- Operation manual

* Machinevideo :
<https://www.youtube.com/watch?v=IUilqV6t-CA>

Machine attributes

sheet width - max.:	1010 mm
plate thickness:	4,0 mm ST
plate thickness:	2,5 mm VA
plate thickness:	6,0 mm ALU
number of strokes - loaded:	~ 20 Hbe/min
cutting angle:	1,5 °
work height max.:	900 mm
total power requirement:	5,5 kW
weight of the machine ca.:	2200 kg.
range L-W-H:	1426 x 2155 x 1606 mm

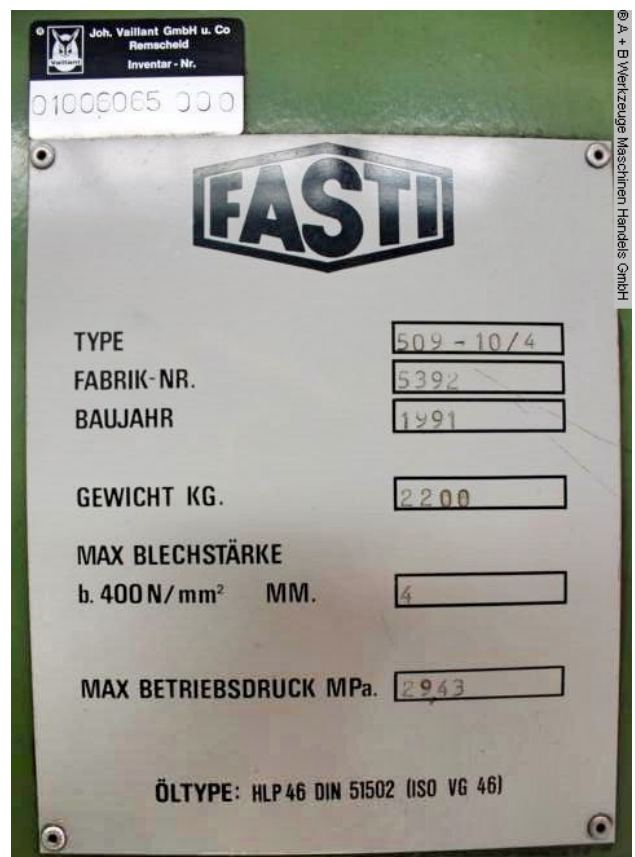
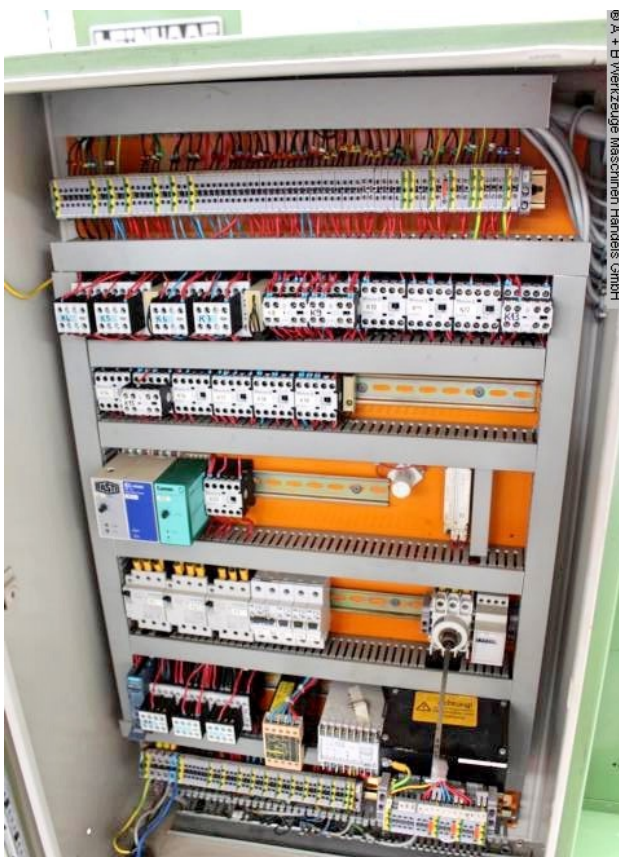
Machine images





Rottweg 17 • D 48683 Ahaus
 Tel. (0 25 61) 93 84-0
 Fax (0 25 61) 93 84 36
 Internet: www.ab-maschinen.de
 E-Mail: info@ab-maschinen.de

Schweißtechnik
 Lagereinrichtungen
 Industriebedarf
 Werksvertretungen
 Gebrauchtmachines



© A + B Werkzeuge Maschinen Handels GmbH

© A + B Werkzeuge Maschinen Handels GmbH