



Rottweg 17 • D 48683 Ahaus
Tel. (0 25 61) 93 84-0
Fax (0 25 61) 93 84 36
Internet: www.ab-maschinen.de
E-Mail: info@ab-maschinen.de

Schweißtechnik
Lagereinrichtungen
Industriebedarf
Werksvertretungen
Gebrauchtmaschinen

EHT TSS 4-31 (1008-9325371)



Control type
NC

Construction year
1985

Machine no.
1008-9325371

Make
EHT

Location
Ahaus

** from a maintenance workshop

Equipment:

- electro-hydraulic sheet metal shear "swing cut"
- machine frame = all-steel welded construction
- ELGO NC control model P8511, control panel at the front left
 - * for positioning the electro-motoric rear stop
 - * target/actual position value input possible
 - * adjustment by three-phase motor via toothed belt
- support table with ball rollers
 - * there are recessed grips between the table plates
- front finger guard
- hydraulically acting sheet metal hold-down device
- 1x freely movable foot switch
- emergency stop button at the front
- movable scrap switch
- original operating instructions + circuit diagram

** Special accessories included:

- EHT pneumatic sheet metal holding device for thin sheet metal cuts
- 1x EHT extra long side stop 3.000 mm with mm scale & support foot
- 1x EHT extra long support arm with 3.000 mm with scale & Support foot
- EHT additional support arms with mm scale

Machine attributes

sheet width:	3100 mm
plate thickness:	4.0 mm
thickness at "Niro-steel":	2.5 mm
cutting angle adjustment:	1.0 °
back stop - adjustable:	10 - 1000 mm
adjustment speed:	180 mm/s
down holder:	21 Stück
strokes per minute:	18 - 31
oil volume:	160 L
Control:	ELGO P8511
column arm:	200 mm
distance between columns:	3050 mm
0:	max. 300 bar
voltage:	400 V
main drive:	9.0 kW
weight of the machine ca.:	4800 kg.
dimensions of the machine ca.:	3660 x 2070 x 2140 mm

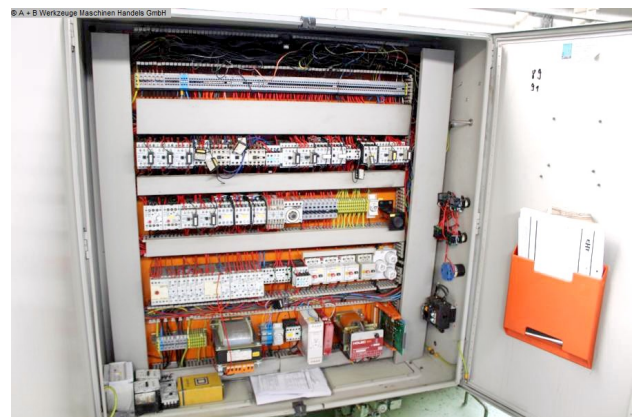
Machine images





Rottweg 17 • D 48683 Ahaus
 Tel. (0 25 61) 93 84-0
 Fax (0 25 61) 93 84 36
 Internet: www.ab-maschinen.de
 E-Mail: info@ab-maschinen.de

Schweißtechnik
 Lagereinrichtungen
 Industriebedarf
 Werksvertretungen
 Gebrauchtmachines





Rottweg 17 • D 48683 Ahaus
Tel. (0 25 61) 93 84-0
Fax (0 25 61) 93 84 36
Internet: www.ab-maschinen.de
E-Mail: info@ab-maschinen.de

Schweißtechnik
Lagereinrichtungen
Industriebedarf
Werksvertretungen
Gebrauchtmaschinen

© A + B Werkzeuge Maschinen Handels GmbH

EISEN u. HAMMERWERK G. M. B. H. TENINGEN / BADEN	
Maschinentype	TSS 4-31
Leistung	4 kW
Arbeitslänge	2050
Baujahr	1983
Fabrik Nr.	100972
Stromart	3-Ph
Frequenz	50 Hz
Betriebsspannung	380 V
Steuerspannung	220 V
Nennstrom	17 A
Nennstrom der Hauptsicherung	25 A
Schaltplan	Nr. 1135-2142/92