



Rottweg 17 • D 48683 Ahaus  
Tel. (0 25 61) 93 84-0  
Fax (0 25 61) 93 84 36  
Internet: [www.ab-maschinen.de](http://www.ab-maschinen.de)  
E-Mail: [info@ab-maschinen.de](mailto:info@ab-maschinen.de)

Schweißtechnik  
Lagereinrichtungen  
Industriebedarf  
Werksvertretungen  
Gebrauchtmaschinen

## DURMA AD-R 30.135 (1008-9308418)



**Control type**  
CNC

**Construction year**  
2011

**Machine no.**  
1008-9308418

**Make**  
DURMA

**Location**  
Ahaus

\*\* good condition (!!)

\*\* current new price approx. 80.000 euros

\*\* special price on request

- in checked condition - machine video -

<https://www.youtube.com/watch?v=dyv7iQXcRt4>

Equipment:

- electro-hydraulic CNC press brake
- two synchronized cylinders with "HIGH PERFORMANCE" hydraulic components
- with CYBELEC CNC control - "DNC 880S"
- \* 2D graphic display for display and multiple simulation
- \* graphic 2D programming
- \* easy handling
- \* automatic bending sequence calculation and collision detection
- \* large product and tool library
- \* automatic tonnage calculation (pressure)
- swiveling operation, front right
- CNC controlled axes: Y1 + Y2 + X + R + CNC crowning

- upper beam with solid, self-lubricating four-way guide
- CNC electro-motorized back stop (X axis)
  - \* with 2x manually adjustable stop fingers
  - \* Adjustment range up to max. 650 mm
- CNC electro-motor height adjustment of the rear stop (R axis)
  - \* Adjustment range up to max. 250 mm
- CNC electro-motor table cambering
- AMADA/RAPID pneumatic upper tool clamp
- AMADA lower tool holder, including die shoe
- FIESSLER LASER safety device at the front
- 2x front, movable support arms ("Sliding" system)
- side safety device (swinging doors)
- rear safety device (swinging door)
- 1x freely movable foot switch
- large hydraulic oil tank to keep the operating temperature low
- original operating instructions

## Machine attributes

pressure:	135 t
chamfer lenght:	3050 mm
distance between columns:	2600 mm
column arm:	410 mm
ajustment speed:	160 mm/sec
working feed:	10.0 mm/sec
return speed:	120 mm/sec
stroke:	265 mm
dayligth:	530 mm
table height:	900 mm
oil volume:	200 ltr.
control:	DNC 880 S
Number of working hours:	~ 17.200 h
total power requirement:	15.0 kW
weight of the machine ca.:	10250 kg.
range L-W-H:	4570 x 2360 x 2900 mm

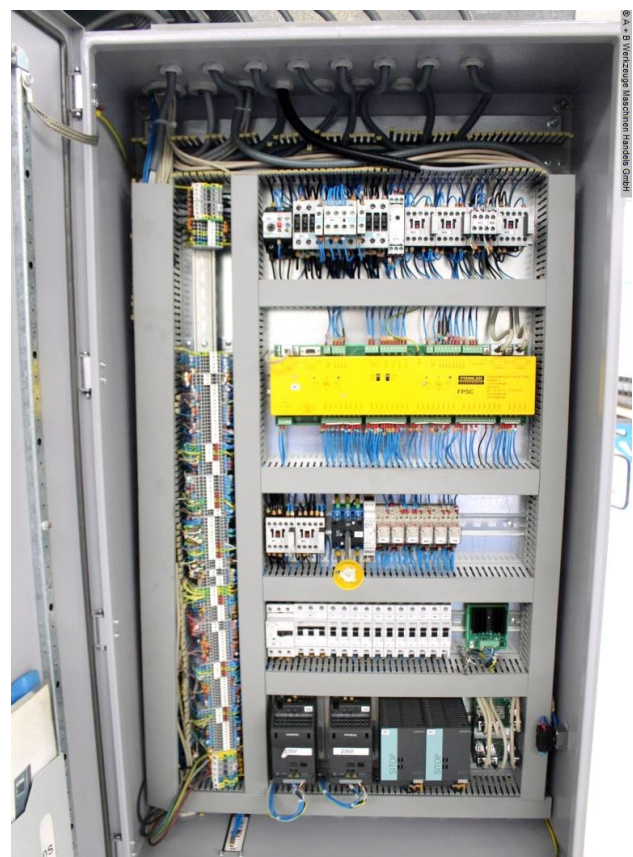
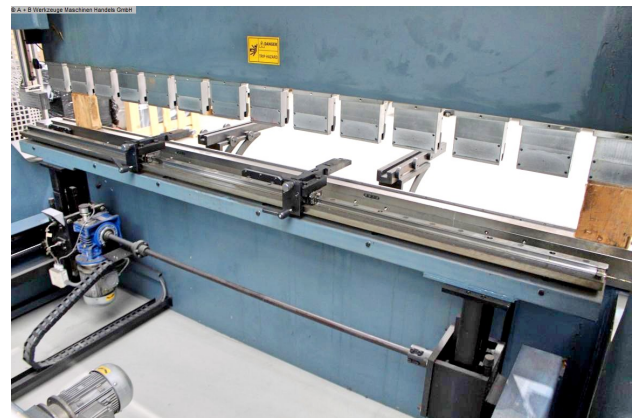
## Machine images





Rottweg 17 • D 48683 Ahaus  
 Tel. (0 25 61) 93 84-0  
 Fax (0 25 61) 93 84 36  
 Internet: [www.ab-maschinen.de](http://www.ab-maschinen.de)  
 E-Mail: [info@ab-maschinen.de](mailto:info@ab-maschinen.de)

Schweißtechnik  
 Lagereinrichtungen  
 Industriebedarf  
 Werksvertretungen  
 Gebrauchtmachines







Rottweg 17 • D 48683 Ahaus  
Tel. (0 25 61) 93 84-0  
Fax (0 25 61) 93 84 36  
Internet: www.ab-maschinen.de  
E-Mail: info@ab-maschinen.de

Schweißtechnik  
Lagereinrichtungen  
Industriebedarf  
Werksvertretungen  
Gebrauchtmachines

© A + B Werkzeuge Maschinen Handels GmbH

TYPE		AD - F 5000	
URETIM YILI BAUJAHR ANNO DI COSTRUZIONE ROK VÝROBY ROK PRODUKCJI TILLVERKNINGSÅR	- MANUFACTURING YEAR - AÑO DE FABRICACION - ANNEE FABRICATION - VALMISTUSVUOSI - BYGGÅR - BOUWJAAR	2011	
SERİ NO MASCH-NR MATRICOLA VÝROBNÍ ČÍSLO NUMER MASZYN SERIENUMMER	- MACHINE NO - N°DE SERIE - N°DE SERIE - VALMISTUSNUMERO - MASKINNR. - SERIE-NUMMER	7828110000	
KAPASITE KAPAZITAT CAPACITA KAPACITA NACISK KAPACITET	- CAPACITY - CAPACIDAD - CAPACITE - TEHO - KAPASITET - CAPACITEIT	3050X135 70N	
STROK HUB CORSO ZDVUH SKOK SKOK	- STROKE - CARRERA - COURSE - ISKUNPITUUS - SLAG - SLAG	265	mm
VURUS SAYISI HUBZAHL PRO MIN. COLPI AL MINUTO POČET ZDVUH ZA MIN. CYKLE NA MINUTE SLAG/MINUT	- STROKE IN A MINUTE - GOLPES POR MINUTO - COUPS PAR MINUTE - ISKULUKU - SLAGANTALL PR. MIN. - AANTAL SLAGEN/MIN	1	1/min
YAG KAPASITESI ÖL TANK KAPAZITAT CAPACITA SERBATOIO OLEJÁVA NÁPLŇ POJEMNOST ZBIORNIKA OLJETANKENS RYMD	- LUBRICANT CAPACITY - CAPACIDAD DEL LUBRICANTE - CAPACITE RESERVOIR - OLJYMAÄRÄ - KAPACITET OLJETANK - TANK INHOUD	200	lt
ÜST KALIP AĞIRLIĞI GEWICHT OBERWERKZEUG PESO UTENSILE SUPERIORE HMOTNOST H NÁSTROJE CIĘŻAR NARZ. GÓRNEGO ÖVERVERKTYGETS VIKT	- TOP TOOL WEIGHT - PESO DEL PUNZÓN - POIDS DU POINÇON - YLATYOKALUN PAINO - VEKT ÖVERVERKTOEY - GEWICHT BOVENSTEMPEL	55	Kg
ALT KALIP AĞIRLIĞI GEWICHT UNTERWERKZEUG PESO UTENSILE INFERIORE HMOTNOST S NÁSTROJE CIĘŻAR NARZ. DOŁNEGO UNDERVERKTYGETS VIKT	- BOTTOM TOOL WEIGHT - PESO DE LA MATRIZ - POIDS DE LA MATRICE - ALATYOKALUN PAINO - VEKT UNDERVERKTOEY - GEWICHT MATRIJS	65	Kg
EN BREITE LARGHEZZA ŠÍŘKA SZEROKOŚĆ DUP	- WIDTH - ANCHO - LARGEUR - LEVEYS - BREEDTE	2380	mm
BOY LÄNGE LUNGHEZZA DĚLKA DŁUGOŚĆ LÄNGD	- LENGTH - LARGO - LONGUEUR - PITUUS - LENGDE - LENGTE	4570	mm
YÜKSEKLİK HÖHE ALTEZZA VÝŠKA WYSOKOŚĆ HÖJD	- HEIGHT - ALTO - HAUTEUR - KORKEUS - HOEYDE - HÖGDE	2310	mm
AĞIRLIK GEWICHT PESO HMOTNOST CIĘŻAR MÄSKIVIKT	- WEIGHT - PESO - POIDS - PAINO - VEKT - GEWICHT	2610	Kg
<p><b>DURMAZLAR MAKİNA SANAYİ ve TİCARET A.Ş.</b> Organize Sanayi Bölgesi 75. Yıl Bulvarı BURSA / TÜRKİYE Tel: +90 224 219 18 00 pbx. Fax: +90 224 242 75 80 <b>MADE IN TURKEY</b></p>			