



Rottweg 17 • D 48683 Ahaus  
Tel. (0 25 61) 93 84-0  
Fax (0 25 61) 93 84 36  
Internet: www.ab-maschinen.de  
E-Mail: info@ab-maschinen.de

Schweißtechnik  
Lagereinrichtungen  
Industriebedarf  
Werksvertretungen  
Gebrauchtmaschinen

## BEYELER RH 60x2050 (1008-9308363)



**Control type**  
CNC

**Construction year**  
1990

**Machine no.**  
1008-9308363

**Make**  
BEYELER

**Location**  
Ahaus

\*\* Machine from a workshop for the disabled  
\*\* maintained condition (!!)

### Furnishing:

- CNC electro-hydraulic press brake
- CNC CYBELEC EURO IV control unit
- \* high resolution screen
- \* Clear, concise menus in the operator's language
- \* Tools and products library
- Control panel, right front
- CNC controlled axes: Y1 + Y2 + X axis
- CNC electric back gauge (X axis)
- 2x manually adjustable stop fingers
- AMADA-SYSTEM A upper tool adapter including upper wedge crowning
- \* very many bending/insertion tools (stamps + matrices)
- 2x front material/sheet metal support arms
- freely movable 2-hand/foot control
- side protection device (protective grille)
- rear protective device (protective grille)

- Operating instructions machine + control

\* Machine link:

<http://mhp.logotech.de/hpm/v7/Datenblatt/datenblatt.php?machineno=1008-9308363>

## Machine attributes

pressure:	60.0 t
chamfer length:	2050 mm
distance between columns:	1550 mm
column arm:	255 mm
stroke:	165 mm
daylight:	360 mm
table height:	890 mm
adjustment speed:	85.0 mm/sec
working feed:	6,5 mm/sec
back stop - adjustable:	max. 500 mm
oil volume:	100 ltr.
total power requirement:	4,0 kW
weight:	4600 kg
range L-W-H:	2700 x 1450 x 2400 mm

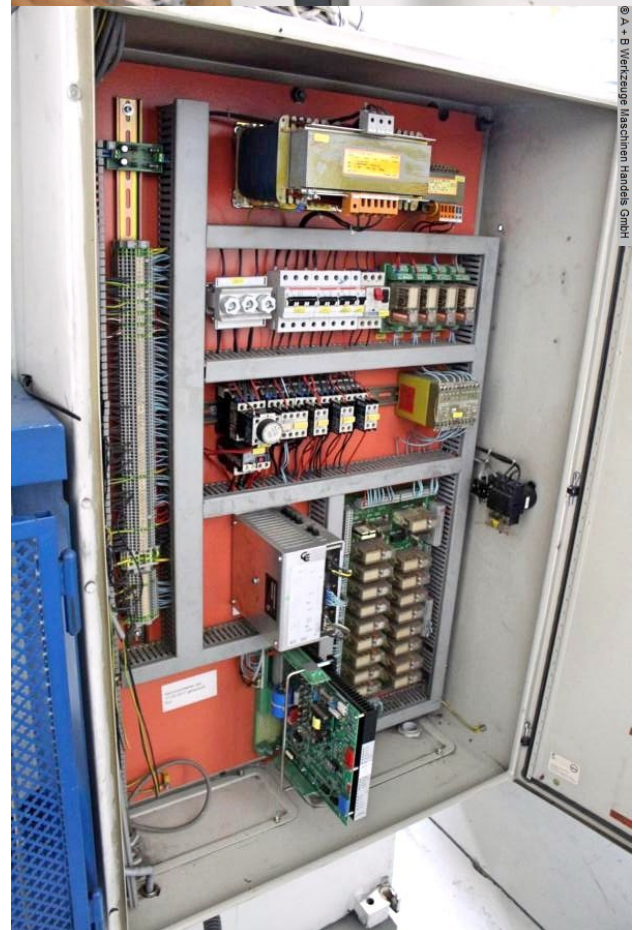
## Machine images





Rottweg 17 • D 48683 Ahaus  
Tel. (0 25 61) 93 84-0  
Fax (0 25 61) 93 84 36  
Internet: [www.ab-maschinen.de](http://www.ab-maschinen.de)  
E-Mail: [info@ab-maschinen.de](mailto:info@ab-maschinen.de)

Schweißtechnik  
Lagereinrichtungen  
Industriebedarf  
Werkvertretungen  
Gebrauchtmaschinen



© A + B Werkzeuge Maschinen Handels GmbH

**Beyeler**

Blechbearbeitungsmaschinen GmbH  
Mühlhäuser Straße 3  
D-99867 Gotha  
Tel. (03621) 3830 - Fax (03621) 383383

TYP	F III 60 X 2050
HERSTELL.-NUMMER	94/510/004
HERSTELL.-JAHR	1998
NENNSPANNUNG	3 X 400V
NENNFREQUENZ	50 HZ
NENNSTROM	16 A
ZULEITUNGSSICHERUNG	16 A
GEWICHT	4300 KG